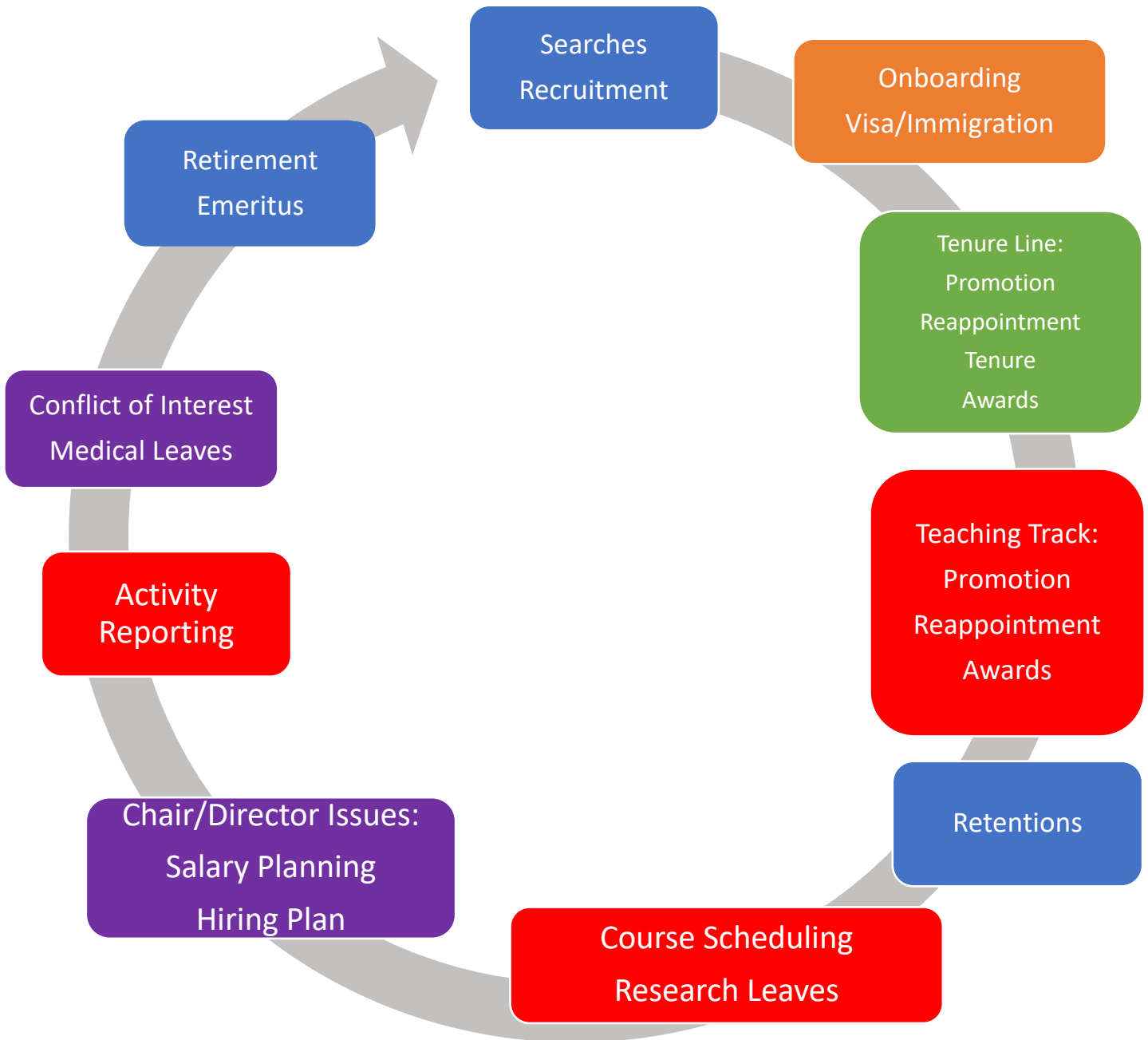


FACULTY AFFAIRS CONTACT SHEET

Edward Gibson Associate Dean, Faculty egibson@northwestern.edu
Jane Corey Holt Director jane-holt@northwestern.edu 847-467-6628
Tammy Rosner Assoc Director t-rosner@northwestern.edu 847-491-2210
Mari Daniele Asst Director mari@northwestern.edu 847-467-0293
Felicia Dominguez Progam Asst felicia.dominguez@northwestern.edu 7-1683
Quinn Leach Program Asst quinn.leach@northwestern.edu 1-3276
Elizabeth Kim Asst Dean, Faculty Advancement weinberg_assistdeanfacultyadvancement@northwestern.edu
Email for TL faculty advancement: weinberg_assistdeanfacultyadvancement@northwestern.edu
Email for TTF promo/reappt: wcas-lecturerassocdean@northwestern.edu

For Matters relating to	Primary Contact	Secondary Contact
Recruitment & Searches	Mari Daniele	Jane
Onboarding	Quinn Leach	Mari
Visa/Immigration	Quinn Leach	Mari
Promotion & Tenure		
Teaching Track	Tammy Rosner	Jane/Felicia
Tenure Line	Elizabeth Kim	Felicia/Jane
Awards	Felicia Dominguez	Jane
Retentions	Mari Daniele	Jane
Elections	Tammy Rosner	Felicia
Appointments:		
Short Term Appointments	Mari Daniele	Quinn
Reappointments (TL & TT)	Tammy Rosner	Jane
Chair Appointments	Jane Corey Holt	Tammy
Program Dir Appointments	Tammy Rosner	Jane
Leaves – Medical & Family	Jane Corey Holt	Beth Clifford Smith
Leaves – Research/Academic & Personal	Tammy Rosner	Felicia
Teaching Schedules & Expense Authority	Tammy Rosner	Jane
Salary Planning	Jane Corey Holt	Tammy/Felicia
Hiring Plan	Jane Corey Holt	Mari
Retirement/Offboarding	Mari Daniele	Quinn
General Inquiries	Jane Corey Holt	Tammy

Faculty Affairs – Weinberg College



Edward Gibson, Associate Dean for Faculty		
Jane Corey Holt – Director	jane-holt@northwestern.edu	7-6628
Tammy Rosner – Assoc Director	t-rosner@northwestern.edu	1-2210
Mari Daniele – Asst Director	mari@northwestern.edu	7-0293
Quinn Leach – PA	quinn.leach@northwestern.edu	1-3276
Elizabeth Kim – Asst Dean	Elizabeth.kim1@northwestern.edu	7-0578
Felicia Dominguez – PA	felicia.dominguez@northwestern.edu	7-1683